

JOURNEY 21-22

tribe home

Rugs with soul, handmade by global weavers.

t.



VINTAGE PERSIAN

Origin: Bakhtiari

Valuing the art of following your intuition, our philosophy at Tribe Home is simple, we believe at the heart of every home lays a beautiful handmade rug. We will help you find the perfect rug that completes your dream home, whilst preserving the craft of handmade rugs globally.

TRACING THE PAST – VINTAGE PERSIAN

Shot on location at the Establishment Studios in Melbourne to celebrate this special collection of Vintage Persian rugs and to give them the spotlight they deserve, we invite you to go on a journey with us and uncover the connections between East and West. ‘Tracing the past’ is a juxtaposition of how well old and new work together, taking on a whole new interior design direction. This collection consists of carpets plucked from history that find their place in the modern world, bringing with them a story destined to be repeated.

Legacies, history and skill are handed down from generation to generation then woven into the soul of our Vintage Persian carpets making them all that much more special. Restoring these rugs from another time is the sustainable practice of overdyeing rugs which are unloved, worn and faded. Through this process we take part in the recycling movement, with one rug travelling through hundreds of hands and multiple decades before it covers your floor.

This recycling movement helps preserve traditional rugs of note for future generations whilst acknowledging the skill and care taken to create them in the first place.

VINTAGE PERSIAN
Establishment Studio, 2021

Objects made slowly by hand still have a place
in today's world – telling rich stories, sparking
conversations and inspiring new memories
for years to come.







VINTAGE PERSIAN

Each piece uniquely one of a kind

A hand-knotted Vintage rug is ever-present, there to ground and nurture us, compelling us to connect with the people and the space that surrounds us.







VINTAGE PERSIAN 13216
Origin: Kerman
Prized for their craftsmanship

Incorporating Vintage carpets into modern aesthetics will create standout interiors that are truly in a league of their own.

Vintage Persian 13196
One of a kind

The provenance of a Vintage Persian carpet is essential in determining its outcome, with Kerman, Bakhtiari and Tabriz rugs considered to be some of the most highly sought after due to their superior quality and design.







Wisdom
Andrew Schickel

VINTAGE PERSIAN 13034
Origin: Bakhtiari Tribe

Bring historical design movements into alluring, contemporary interiors with Vintage Persian carpets waiting to be discovered.



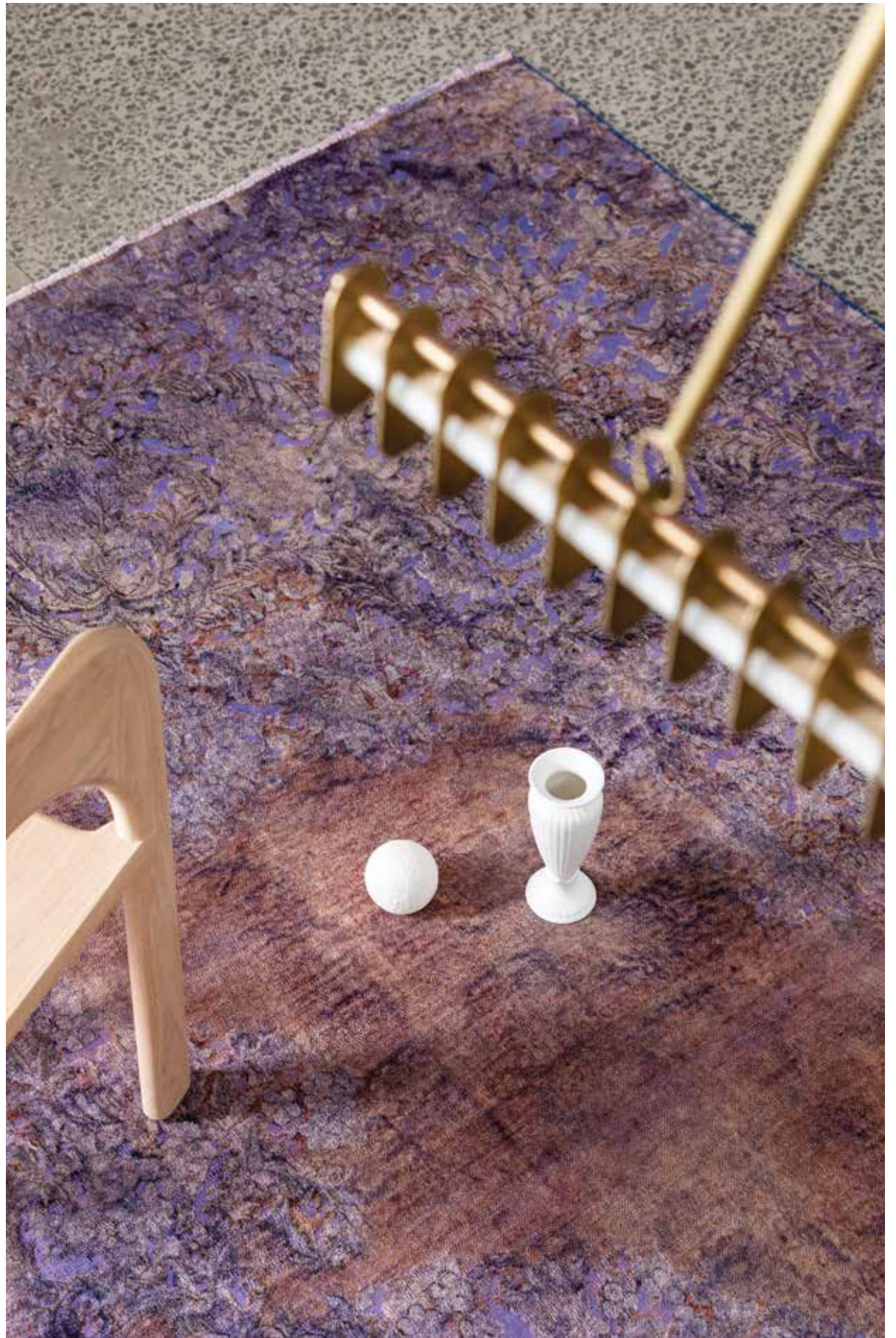


TINA RICHARDS

Tribe Home, Owner & Director

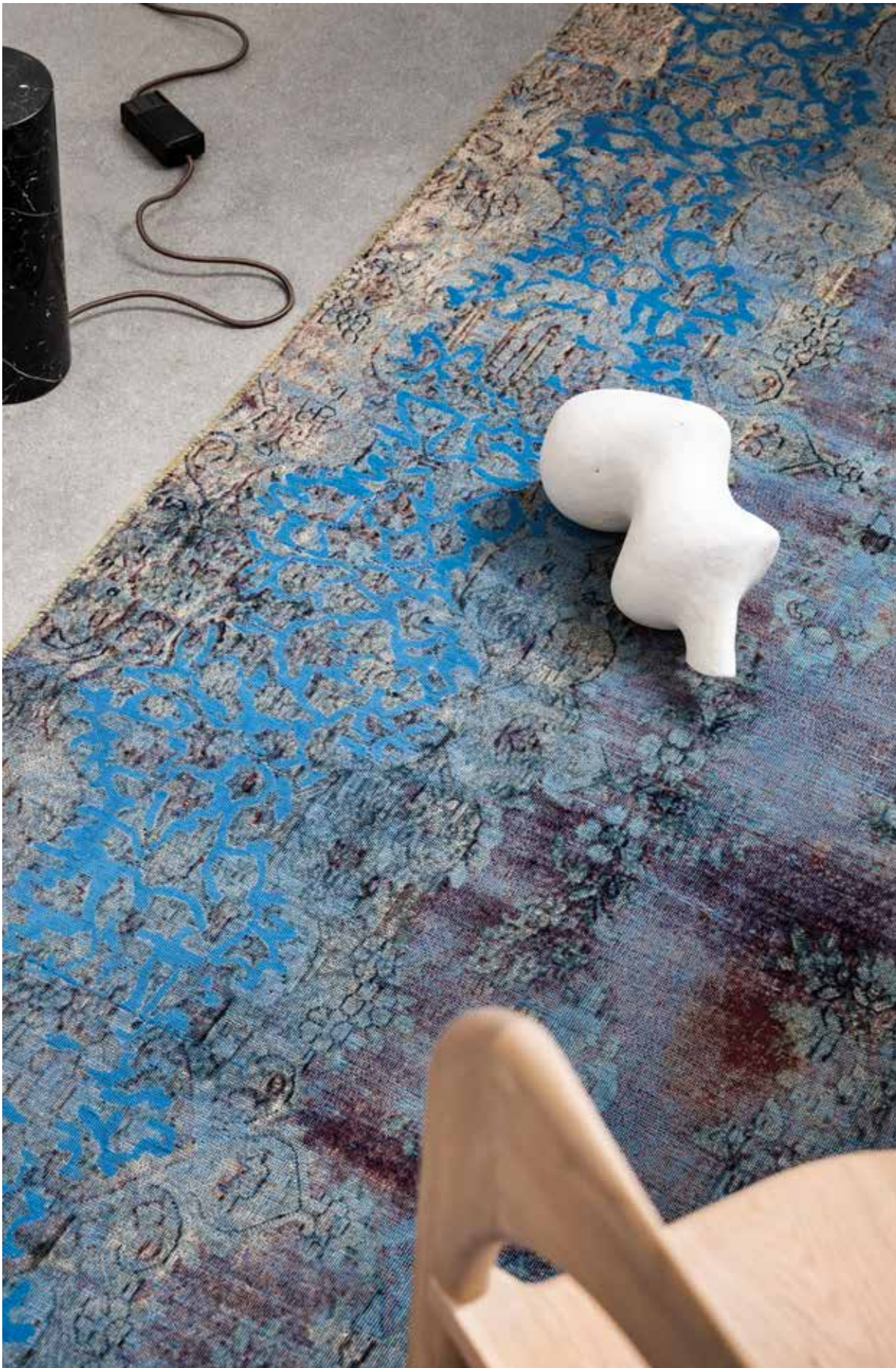
“Tribe Home draws from numerous sources of reference and inspiration. Among them are furniture, art and what is happening in the design world. Although always looking forward, we cannot ignore our past. Every rug is chosen looking through the lens of a designer’s eye and hand selected by us. How the rug will relate to a room and space and what impact it will have is paramount. Interior schemes have already formed in our minds when selecting our Vintage carpets. We feel a strong connectedness to every piece that forms each of our collections”.





VINTAGE PERSIAN 8544
Origin: Kerman

Revived pieces for a new generation,
our Vintage Persian carpets are
future heirlooms worthy of
admiration and desire.



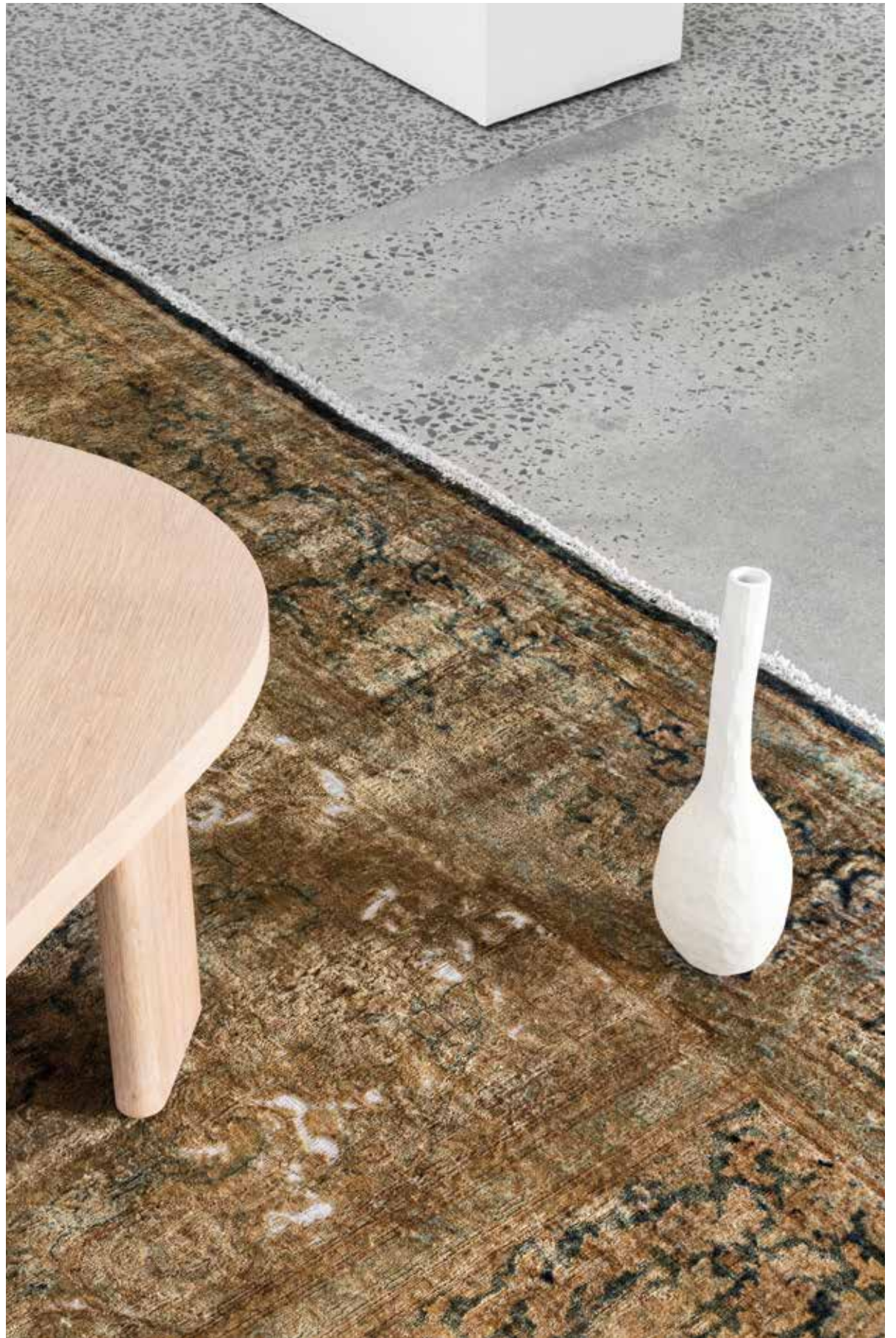
VINTAGE PERSIAN 9589

Origin: Kerman

We look back in order to look forward, defining current and future trends with designs of the past.







VINTAGE PERSIAN I3218
Origin: Kerman

Our Vintage Persian Collection consists of carpets guaranteed to make a statement and push boundaries as we honour the hands that weaved these pieces many years ago and the hands that have now added to their story.



PRESERVING THE PAST
Vintage Persian Collection.

Beyond compare, each of our finely hand-knotted Vintage Persian rugs are up to 100 years old and come with a certificate of authenticity.



t.

21/22 COLLECTION

Consisting of a combination of highly textured pieces and luminous colourways, our 21/22 Collection will leave you feeling cocooned and cosy all year long. Within the collection you will discover three separate and distinct capsules, each with charms of their own.

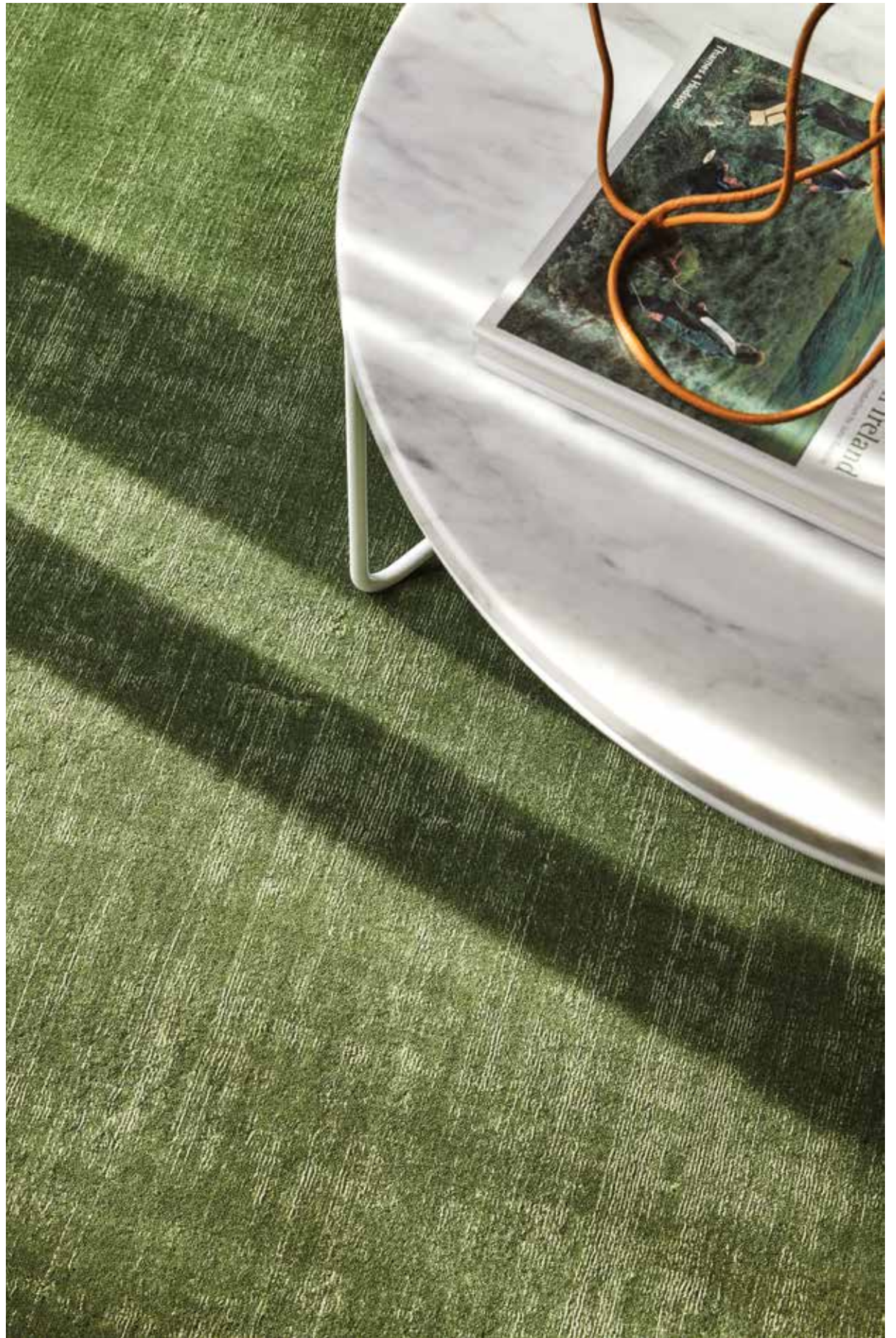
NEW MINIMALISM – COMMIT TO COLOUR

Handloomed Carlo Rug
(*Opposite page*)

New minimalism is here, delivering pops of colour in an otherwise modern space of neutral materials. Bold yet simple, these pieces are at their core Scandinavian designs with an Australian Twist. Ocean hues and shades of green with subtle hints of ivory work together to bolster an optimistic decorating trend that is both versatile and chic.







TAIT - WATERCRESS
Handloomed wool

Simple and classical, our Tait rug in the rich Watercress colour pairs easily with a myriad of interior styles. The soothing forest green saturation will impress a visual calm within your interiors.



MALIBU
Hand-tufted wool

Just as its name implies, our Malibu rug exudes an understated coastal living flavour. Tones of pale aqua and peach create added interest to the irregular herringbone pattern running throughout its design.



TAIT - RICE
Handloomed wool





MATEO
Handloomed viscose, wool blend

Handloomed with a combination of wool and viscose our mid-century Mateo rug employs a modern block design in tones of charcoal, grey and silver that will elevate any space.

NELSON
Hand-tufted wool

Add a touch of effervescence to your designs with our Nelson rug. Combining an asymmetrical diamond motif with bold blue and delicate beige saturations allows our Nelson rug to make a statement in any room.







KENYA – BUFF
Hand-tufted wool

Our Kenya Buff rug is a timeless piece offering a soft, diamond-like motif complimented by its ivory and nude beige tones. Hand-tufted with a blend of wool and viscose lends Kenya Buff the ability to fit and suit every setting of your home.





CRETE
Modern Tribal Collection

With delicately hand-carved silvery greys and teal blues that sit upon a grey/white background, our Crete rug will instil a soothing calmness into your interiors, just like abstract art.







TUNISIA
Hand-tufted wool

Bold yet simple, the muted tones of blue/grey contrasting alongside ivory within our Tunisia rug add an essential softness to its modern tribal inspired design.

WABI SABI MEETS LOG CABIN

Oban, handwoven rug
(Opposite page)

These highly textured rugs have been curated with the intention of creating trans-seasonal moody homes that ooze warmth and feelings of comfort. The combination of colours, design and weaving patterns of each rug will envelop your home and leave you cocooned and cosy all year long.

Inspired by Wabi Sabi aesthetics, known for finding beauty in the imperfect and handmade, these textured designs transcend seasons, embracing authenticity and promoting an overall sense of harmony and peace.

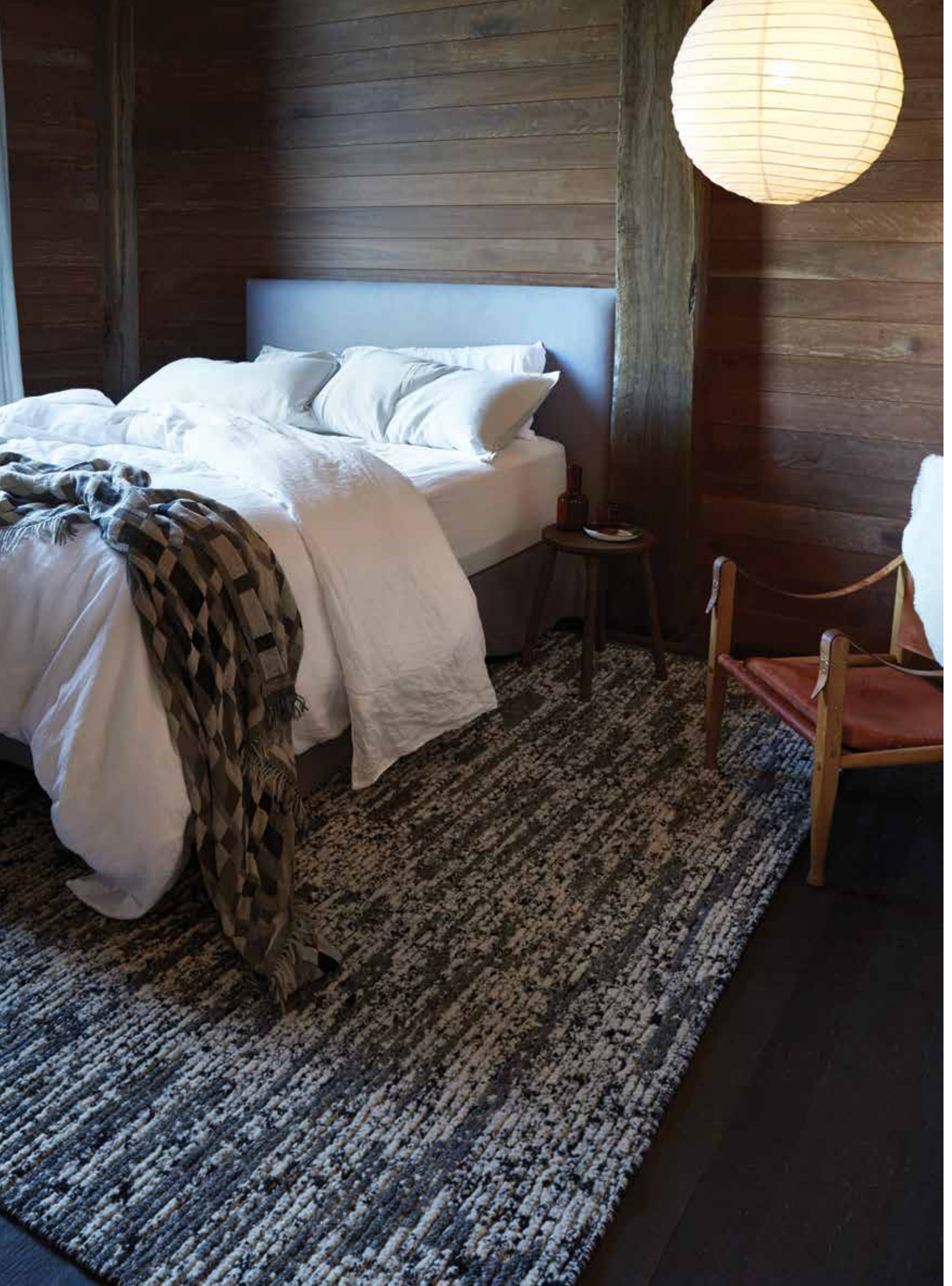






ALPINE
Hand-knotted wool rug

Adding intimacy and a sense of calm to every setting, the 100% hand-sheared Alpine rug is full of tactility and subtleties.





INVERNESS
Handwoven wool rug

Natural texture emerges due to the character of raw hand-carded wool. Our Inverness rug is the definition of touchable texture.



SKYE
Handwoven wool rug

With shades of blues and charcoal, the rugged and individual Skye is a considered design curated with the intention to create a relaxing retreat.





KONRAD

Hand-knotted wool rug

Scandinavian in spirit, our hand-knotted Konrad rug offers balance and proportion to every space. Anchored by the warmth of its soft to touch pile, our Konrad rug will create quiet and contemplative interiors that are scenic and peaceful.



TRANS-SEASONAL DESIGN

Tribe Home

Influenced by a renewed focus on slowing down, embracing the moment and returning to nature, these 100% wool pieces reference log cabin interiors with their soft and luxurious piles that appeal to the senses.

With a calming palette to complement wood accents, stone and clay, our new textured collection includes the ultimate pieces to create a no-fuss aesthetic. Crafting the perfect place to relax while showcasing the beauty of subdued hues and reflecting our natural surrounds. The rugs within this capsule will bring the magic of a cabin in the woods to your space.

CHALET

*Handwoven wool rug
(Opposite page)*

Designed with longevity in mind, allow these pieces to bring an assuring calm into your interiors and experience the unexpected beauty of rugs inspired by the raw look of nature.





ABERDEEN

Hand-knotted wool rug

Inspired by naturally formed stone walls, our Aberdeen rug will bring a soothing feeling of natural terrain indoors. With a muted earthy palette rich in visual appeal, this 100% hand-knotted wool piece will create a warm and weighted space.





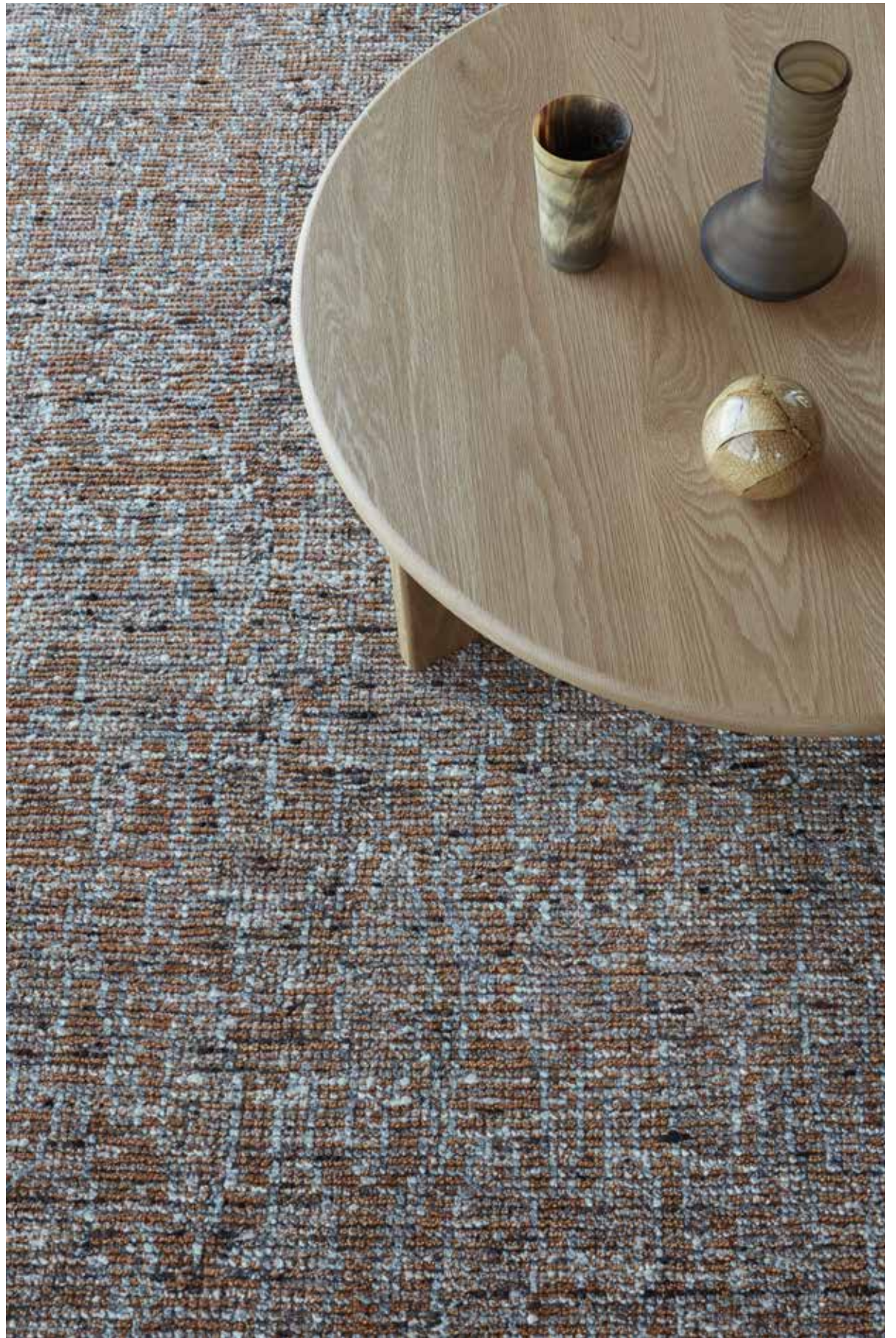
WENSLEYDALE

On location

Shot on location at the Wensley, a bespoke timber, architectural house built from recycled Oregon and Ironbark set high on a sprawling 80-acre property of rolling hills, Director and Founder of Tribe Home, Tina Richards, speaks on the inspiration behind the location and the new capsule.

“The Wensley was the perfect backdrop to shoot our new collection of textured wool rugs that are as natural and organic as the setting itself. This collection was inspired by cabin style, alpine lodges and the Scottish Highlands but with an Australian uniqueness, where the focus is on slowing down, embracing the moment and returning to nature.”





ELLE
Hand-knotted wool rug

With soft and subtle shades of ivory, blue and gold our Elle rug is reminiscent of the natural beauty of outdoor serenity.

ISLA

*Hand-knotted wool rug
(Opposite page)*

Craft the perfect place to relax while showcasing the beauty of subdued hues that reflect our natural surrounds with our Isla rug. The 100% wool and hand-knotted Isla rug throws shades of rust, ivory and grey bringing levity to your space. Create the magic of a cabin in the woods within your own home.







HUSKY

Hand-knotted wool rug

Capturing the essence of Wabi Sabi interiors, our hand-knotted Husky rug is a heavily textured piece, designed with longevity in mind. With a calming palette of ivory to complement wood accents, stone and clay, the high low hand-carved Husky rug is the ultimate piece to create an uncomplicated aesthetic.



MODERN, EARTHY & ORGANIC
Natural wool

These five trans-season designs embrace tones of warm browns, muted greys, and sandy shades, imbuing interiors with an earthy and organic feel. Each colourway conveys a raw appearance that helps bring a tactility and warmth originating in nature. Handwoven with natural, undyed wool and attracting a one-of-a-kind finish these designs will echo the appearance and finishes of the natural world.



20/21 COLLECTION

Tribe Home

This collection saw a return to natural fibres and textures that compliment good design and work perfectly with our Australian way of laid-back living. Throughout this collection you will find earthy shades and hues that are both grounding and welcoming. Leaning away from greys and silvers, you will be inspired by the move towards ivories and muted browns. These neutrals sit alongside one another harmoniously and help to evoke the enviable light and landscape of our country and bring an element of serenity to the home.

A splash of colour can also be seen here and there, as well as the influence of the beloved bohemian and tribal styles. These subtly empowering and exclusive designs evoke an emotive attachment at first glance.

GOLDFINCH

*Handloomed pure silk
(Opposite page)*

This burnt pumpkin hue adds vibrant warmth exemplifying brilliant interiors. A luxurious authentic silk rug with enviable lustre.



VINTAGE PERSIAN 6554

One of a kind

Shot on location in Blairgowrie, Victoria surrounded by ocean, sand and lush greenery, we were able to truly capture the essence of our 20/21 collection, the enviable light and landscape of our country, whilst also demonstrating how well Vintage pieces work in contemporary interiors.









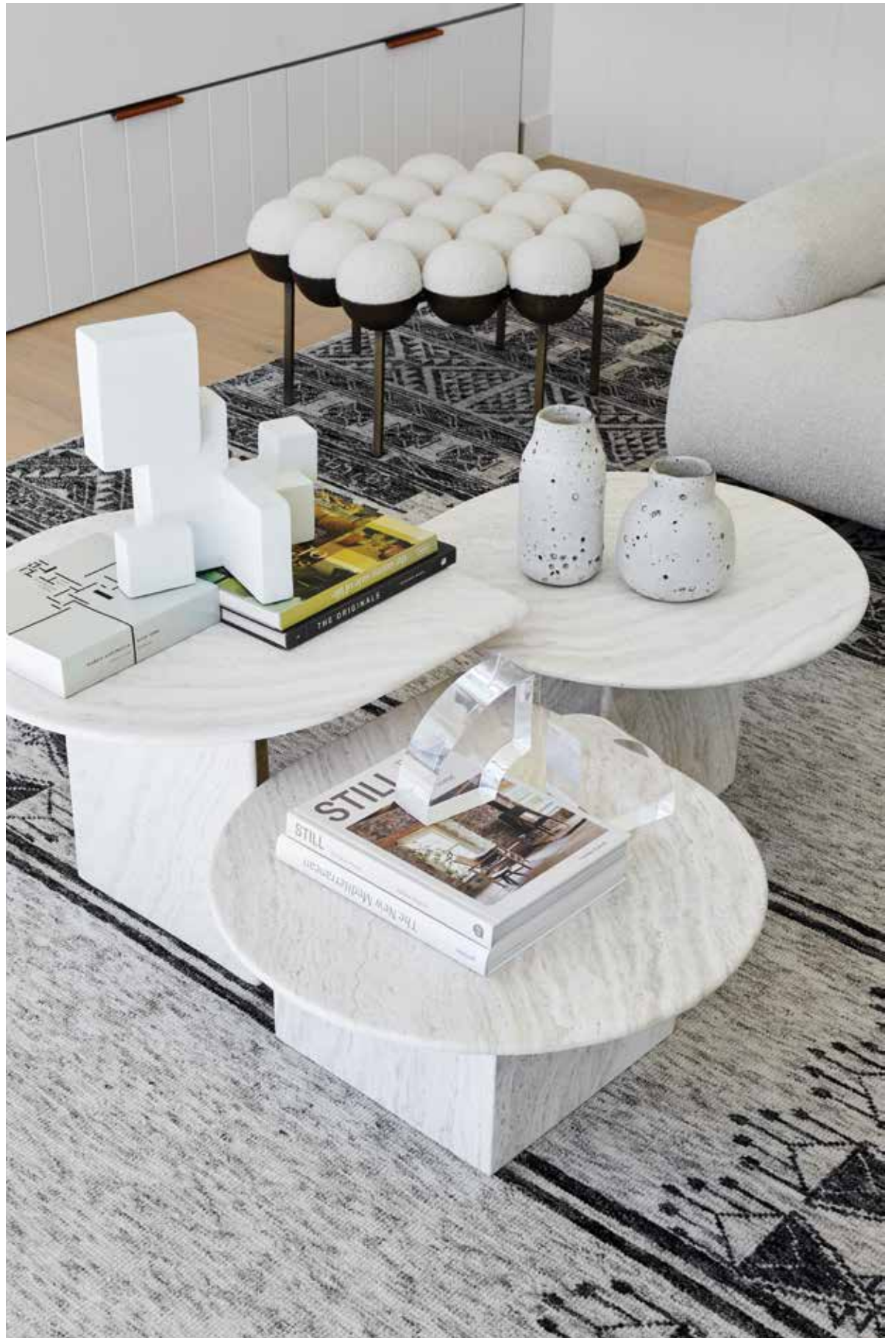
TAMSIN
(This page)

Taking inspiration from Oushak techniques in both design and pattern, the Tamsin rug stuns in hues of pale pinks, powder blues and greens.

BISON
(Opposite page)

With its elegant rectangle motif, the Bison rug is a modern classic. Its soft ivory colouring sits harmoniously on a natural background.





KERALA
Hand-knotted wool blend rug

The neutral tribal patterns of the Kerala rug will define charming character across your floors and present a strong sense of style within your home.



SOHO

Hand-knotted wool rug

With its classic grass design and modern charcoal edging around the binding, the Soho rug is a smart and timeless piece that will blend effortlessly with any interior. Bring your dream space to life with understated style.







SCARPA
*Hand-knotted wool rug
(Opposite page)*

With its dreamy oat colour and cream lace stencil detail, our Scarpa rug is the perfect contemporary design to flatter any space. The Scarpa rug's faded vintage look will add an element of laidback living to every setting.

RAFFLES
*Handloomed pure silk rug
(This page)*

Utilising an Art Deco inspired motif, the silk Raffles rug is a gorgeous hand carved high and low design. Its rich and earthy colour shimmers in the light, creating a luminous atmosphere.





MORRISON NATURAL

*Wool blend
(Opposite page)*

A soothing combination of abrash yarns that offer a neutral finish in an effortless flatweave. The Morrison rug is carefully handloomed with wool that gives texture and sophistication to any space.

RIDGE GREY/CHARCOAL

*Wool blend
(This page)*

Made from NZ and Merino wool our Ridge rug offers a classic Moroccan inspired design, with a diamond motif on the body and a square pattern outlining each edge that is both visually pleasing and highly tactile.

CARNABY
Hand-knotted wool rug

With an exquisite high and low hand-carved design, the luxurious Carnaby rug is a classic and understated piece that helps to create a modern aesthetic. Soft underfoot, the diamond patterned Carnaby rug channels refined styled that will effortlessly tie any space together.



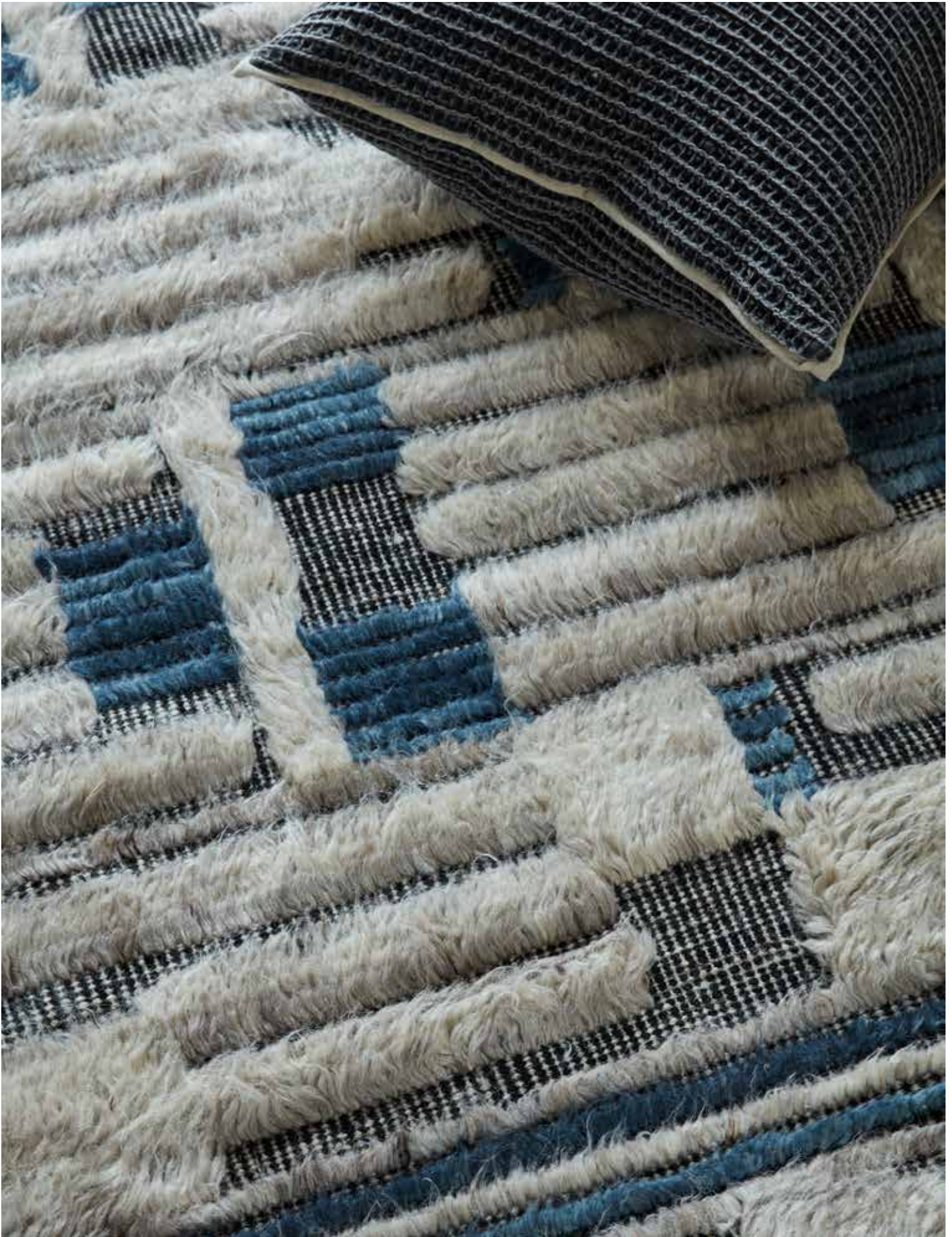






RIDGE NEOPOLITAN
Handwoven wool rug

The imperfect loop pile of the stunning Ridge Neopolitan rug offers shades of pink, mustard, pale blue greys and off-white, all blended together to create a vibrant yet subtle statement.





RABAT
Hand-knotted wool rug

Inspired by Japanese patchwork fabric, our Rabat rug offers beautiful soft blues and greys that evoke a sense of effortless bohemian style.



HUSK IVORY

*Hand-knotted wool rug
(This page)*

Utilising a combination of zig zags, triangles and diamonds to create dimension reminiscent of Moroccan Zanafi designs, our Husk Ivory rug is the perfect foundation for modern interiors.

PABLO

*Hand-knotted wool, bambo silk blend
(Opposite page)*



RUNE
Handloomed wool, viscose blend





KENYA SILVER CLOUD
Hand-tufted wool, viscose blend

Distinctive designs that work with any interior schemes, our Kenya rug is a modern yet minimalist piece that will leave you endlessly inspired.



QUATRO

Handwoven wool, jute blended rug

The perfect base for any interior scheme, our Quatro rug exudes a modern and understated allure. Utilising a wool/jute blend, its natural colouring will bring warmth to your home all year round.



MONGOLIA
Handloomed wool, viscose blend



KALIM
Handloomed wool blend rug

The handloomed Kalim rug offers high/low patterns which will remind you of a charming foreign geometric haven. The shades and carefully contrasting texture of this covering provides an unassumingly charismatic finish to your home or design space.





HIMBA
Handloomed wool blend rug
Modern Tribal Collection

Inspired by lands far away, cocooned by traditional arts and natural lifestyles, allow the texture and pattern within our Himba rug to bring an essential softness to your floors.



MILANO
Handloomed wool rug

Create nothing short of a bold setting with the Milano rug. Its high-low hand carved wool offers amazing hues of grey and a detailed soft pile finish. The Milano is a cosy and warm statement piece, perfect for all areas in your home.







PARKO
Handwoven wool blend rug

Perfectly textured, Parko has a soft touch and bouncy finish that's amazing under foot. Perfect for under your bed or your occasional space.

BOSCO
Handwoven wool blended rug



PRIDE IVORY
Handwoven wool blended rug





AERO SILVER

Handwoven wool blend rug

With its softly blended wool, our Aero Silver rug boasts Scandinavian flair that effortlessly translates into Australian contemporary homes.



GINO GARGOYLE
Handwoven wool rug
(This page)

An ode to minimal living, our Gino rug boasts modern beauty through its ageless tones. It's handmade flat weave nature offers durability and provides a penetrating Scandinavian ambiance.

SKAGEN SILVER
Handwoven wool blended rug
(Opposite page)

Key in crafting polished, yet warm and inviting interior schemes, our Skagen Silver rug will bring a touch of cosy comfort to every space.







ROMAN IVORY

Handwoven wool blend rug

Return to simplicity with our Roman Ivory rug. Handwoven with a wool/viscose blend, this textural piece is key to forming an airy and inspiring home.

SANCTUARY GREY

Handloomed authentic silk rug

Handloomed with silk, our plush Sanctuary rug boasts a modern motif that transcends all interior schemes.





ASTRAL
Handloomed viscose rug

The perfect basis for captivating interiors, our Astral is calming like an oil painting, soothing the soul of your home. The handloomed design permits this glamorous piece a silk-like appearance, creating a neutral rug to suit every room.





PORCELAIN
Hand-knotted bamboo silk rug

Taking one master weaver four months to create a piece that is of beauty, quality and meaningful harmony. Each hand-spun yarn is coloured deliberately, allowing all colours to synchronise collectively and authentically. Set a striking vision upon your floors with our Porcelain rug.

t.

I. CORE COLLECTION

Creative inspiration and vision for homes are diverse and so too is our range of rugs, carefully selected to accommodate for the varied styles of interior design across Australia and New Zealand. Tribe Home is committed to introducing different designs to ensure we aren't narrowing each collection to one look or scheme. These subtly empowering and exclusive designs evoke an emotive attachment at first glance - no look is out of bounds.

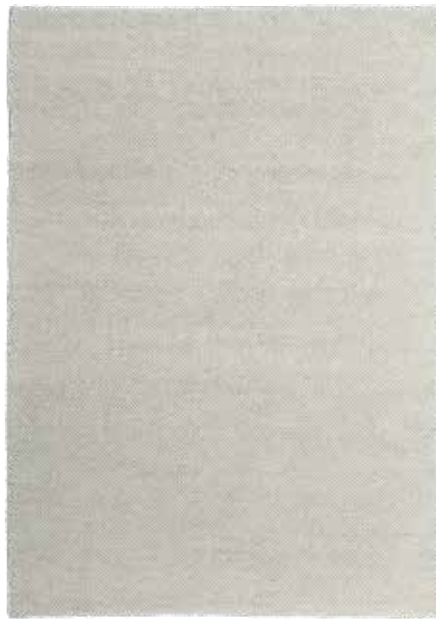
It has never been more apparent that rugs are an integral part of interior design. To imagine a room without a handmade rug is to imagine a space that lacks soul, character and warmth. A room with a handmade rug encourages people to gather and to feel comfortable in their surroundings, leading them to stay longer and linger.

Together we can help preserve the craft of handmade rugs globally whilst contributing to the welfare of those in carpet weaving regions.



Aberdeen

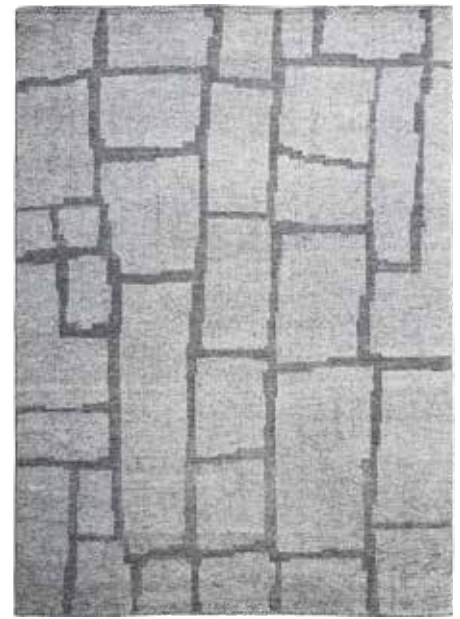
Composition: 100% wool
 Sizes (cm): 200x300, 250x350, 300x400, custom
 Colour: Dark grey/rust
 Pile height: 0.6cm
 Technique: Hand knotted
 Area recommended: All areas
 Origin: India



Aero



Composition: Wool, viscose blend
 Sizes (cm): 160x230 (silver, charcoal only), 200x300, 250x350, 300x400
 Colours (left to right): Ivory, Silver, Charcoal
 Pile height: 2 cm
 Technique: Hand woven
 Area recommended: Bedroom, occasional spaces
 Origin: India



Alpine

Composition: 100% wool
 Sizes (cm): 200x300, 250x350, 300x400, custom
 Colour: Dark Grey/Black
 Pile height: 0.6cm
 Technique: Hand knotted
 Area recommended: All areas
 Origin: India



Astral

Composition: 100% viscose
 Sizes (cm): 200x300, 250x350, 300x400
 Colour: Ivory/grey/soft greens
 Pile height: 1.2cm
 Technique: Hand loomed
 Area recommended: Bedroom, occasional spaces
 Origin: India



Bear

Composition: Natural undyed wool
 Sizes (cm): 160x230, 200x300, 250x350, 300x400
 Colour: Black/brown
 Pile height: 1.5 cm
 Technique: Hand woven
 Area recommended: All areas
 Origin: India



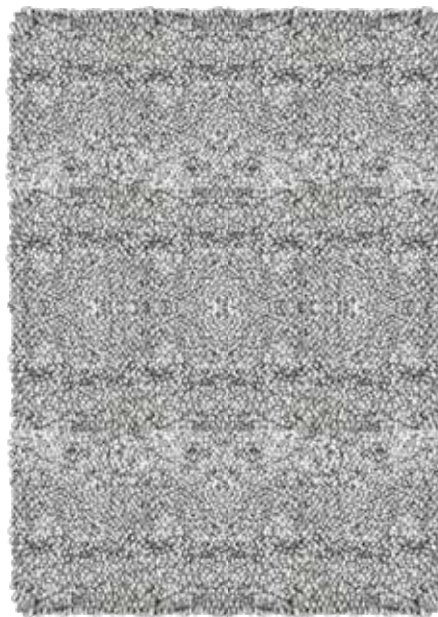
Birch

Composition: Natural undyed wool
 Sizes (cm): 160x230, 200x300, 250x350, 300x400
 Colour: White/natural
 Pile height: 1.5 cm
 Technique: Hand woven
 Area recommended: All areas
 Origin: India



Bison

Composition: 100% wool
 Sizes (cm): 200x300, 250x350, 300x400, custom
 Colour: Ivory
 Pile height: 1.3 cm
 Technique: Hand knotted
 Area recommended: All areas
 Origin: India



Bosco

Composition: 100% wool
 Sizes (cm): 160x230, 200x300, 300x400
 Colour: Silver
 Pile height: 4 cm
 Technique: Hand woven
 Area recommended: Bedroom, low traffic areas, occasional spaces
 Origin: India



Carlo

Composition: 100% viscose
 Sizes (cm): 200x300, 300x400, custom
 Colour: Blue/aqua/silver
 Pile height: 0.7cm
 Technique: Hand loomed
 Area recommended: Low to medium traffic areas
 Origin: India



Carnaby

Composition: 100% wool
 Sizes (cm): 200x300, 250x350, 300x400, custom
 Colour: White/ivory
 Pile height: 1.5 cm
 Technique: Hand knotted
 Area recommended: All areas
 Origin: India



Casablanca



Composition: 100% viscose
 Sizes (cm): 200x300, 250x350, 300x400, custom, 274cm dia round (excl. Rust & Pickle)
 Colours (left to right): Bone, Fog, Iron, Pickle, Rust
 Pile height: 2 cm
 Technique: Hand loomed
 Area recommended: Low to medium traffic areas
 Origin: India



Cesar Cement

Composition: Wool, viscose blend
 Sizes (cm): 250x350, 300x400
 Colour: Grey/ivory
 Pile height: 1.3 cm
 Technique: Hand woven
 Area recommended: Bedroom, occasional spaces
 Origin: India



Chalet

Composition: 100% wool
Sizes (cm): 250x350, custom
Colour: Ivory
Pile height: 1cm
Technique: Hand woven
Area recommended: Low to medium traffic areas
Origin: India



Chestnut

Composition: Natural undyed wool
Sizes (cm): 160x230, 200x300, 250x350, 300x400
Colour: Brown/natural
Pile height: 1.5cm
Technique: Hand woven
Area recommended: All areas
Origin: India



Coromandel

Composition: Wool, bamboo silk blend
Sizes (cm): 250x300, custom
Colour: Charcoal/pink/silver
Pile height: 2.2 cm
Technique: Hand knotted
Area recommended: All areas
Origin: India



Crete

Composition: Wool, viscose blend
Sizes (cm): 200x300, 250x350, 300x400, custom
Colour: Silver/grey/teal blue
Pile height: 0.7cm
Technique: Hand loomed
Area recommended: All areas
Origin: India



Elat

Composition: Wool, viscose blend
Sizes (cm): 200x300, 250x350
Colour: Sky blue with hints of rust orange
Pile height: 1.5 cm
Technique: Hand woven
Area recommended: Bedroom, occasional spaces
Origin: India



Elle

Composition: 100% wool
Sizes (cm): 200x300, 250x350, 300x400, custom
Colour: Gold/grey/orange/ivory
Pile height: 0.5cm
Technique: Hand knotted
Area recommended: All areas
Origin: India



Ferdinand

Composition: Wool, bamboo silk blend
 Sizes (cm): 250x300
 Colour: Beige/silver
 Pile height: 2.2 cm
 Technique: Hand knotted
 Area recommended: All areas
 Origin: India



Flint

Composition: Natural undyed wool
 Sizes (cm): 160x230, 200x300, 250x350, 300x400
 Colour: Grey/black/natural
 Pile height: 1.5 cm
 Technique: Hand woven
 Area recommended: All areas
 Origin: India



Gabi

Composition: Wool, viscose blend
 Sizes (cm): 250x350, custom
 Colour: Charcoal/olive/brown
 Pile height: 2 cm
 Technique: Hand loomed
 Area recommended: All areas
 Origin: India



Germaine

Composition: Bamboo sari silk
 Sizes (cm): 250x300, custom
 Colour: Camel/silver/blue/pink
 Pile height: 2.2 cm
 Technique: Hand knotted
 Area recommended: All areas
 Origin: India



Gino Gargoyle

Composition: 100% wool
 Sizes (cm): 100x500cm, 200x300, 250x350, 300x400,
 Round 274cm (dia)
 Colour: Ivory/grey
 Pile height: 1.2cm
 Technique: Hand woven
 Area recommended: All areas
 Origin: India



Goldfinch

Composition: 100% authentic silk
 Sizes (cm): 250x350, custom
 Colour: Burnt pumpkin
 Pile height: 2 cm
 Technique: Hand loomed
 Area recommended: All areas
 Origin: India



Harvest

Composition: Natural undyed wool
Sizes (cm): 160x230, 200x300, 250x350
Colour: Grey/black/natural
Pile height: 1.5 cm
Technique: Hand woven
Area recommended: All areas
Origin: India



Haze

Composition: 100% viscose
Sizes (cm): 250x350
Colour: Pink/ivory/blue
Pile height: 1.5 cm
Technique: Hand loomed
Area recommended: Bedroom, occasional spaces
Origin: India



Himba

Composition: Wool, viscose blend
Sizes (cm): 170x240, 200x300, 250x350, 300x400, custom
Colour: Ivory/silver
Pile height: 1 cm
Technique: Hand loomed
Area recommended: All areas
Origin: India



Husk

Composition: 100% wool
Sizes (cm): 200x300, 250x350
Colour: Ivory
Pile height: 0.8 cm
Technique: Hand knotted
Area recommended: All areas
Origin: India



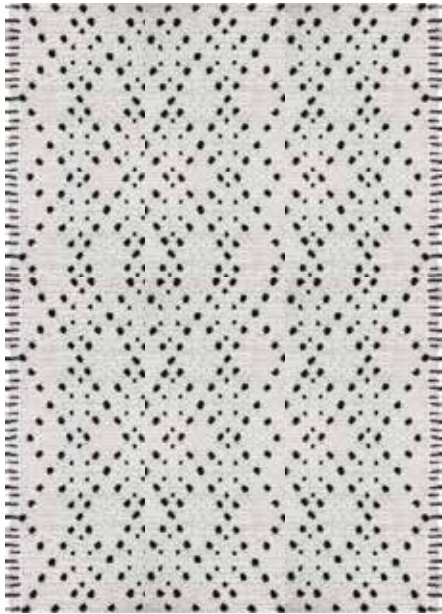
Husky

Composition: 100% wool
Sizes (cm): 200x300, 250x350, 300x400, custom
Colour: Ivory
Pile height: 1.5cm
Technique: Hand knotted
Area recommended: All areas
Origin: India



Inverness

Composition: 100% wool
Sizes (cm): 200x300, 250x350, 300x400, custom
Colour: Ivory/grey/charcoal
Pile height: 0.7cm
Technique: Hand woven
Area recommended: All areas
Origin: India



Iris

Composition: 100% New Zealand wool
 Sizes (cm): 200x300, 250x350
 Colour: Ivory/black
 Pile height: 3 cm
 Technique: Hand woven
 Area recommended: Bedroom, occasional spaces
 Origin: India



Isla

Composition: 100% wool
 Sizes (cm): 200x300, 250x350, 300x400, custom
 Colour: Rust/grey/ivory
 Pile height: 0.6cm
 Technique: Hand knotted
 Area recommended: All areas
 Origin: India



Juno

Composition: 100% wool
 Sizes (cm): 200x300, 250x350, custom
 Colour: Ivory/blue/khaki/eggplant
 Pile height: 1 cm
 Technique: Hand knotted
 Area recommended: All areas
 Origin: India



Kalim

Composition: Wool, viscose blend
 Sizes (cm): 200x300, 250x350, 300x400, custom
 Colour: Beige/silver/green
 Pile height: 1 cm
 Technique: Hand loomed
 Area recommended: All areas
 Origin: India



Katong

Limited Edition

Composition: Wool, viscose blend
 Sizes (cm): 300x400
 Colour: Blue/silver
 Pile height: 1 cm
 Technique: Hand loomed
 Area recommended: All areas
 Origin: India



Kenya



Composition: Wool, viscose blend
 Sizes (cm): Runners, 200x300, 250x350, 300x400, 274 dia (round), custom
 Colours (left to right): Buff, Silver
 Pile height: 1.5 cm
 Technique: Hand tufted
 Area recommended: All areas
 Origin: India



Kerala

Composition: 100% wool
Sizes (cm): 200x300, 250x350, 300x400, custom
Colour: Ivory/charcoal
Pile height: 1 cm
Technique: Hand knotted
Area recommended: All areas
Origin: India



Konrad

Composition: 100% wool
Sizes (cm): 250x350, 300x400, custom
Colour: Multi/greys
Pile height: 0.6cm
Technique: Hand knotted
Area recommended: All areas
Origin: India



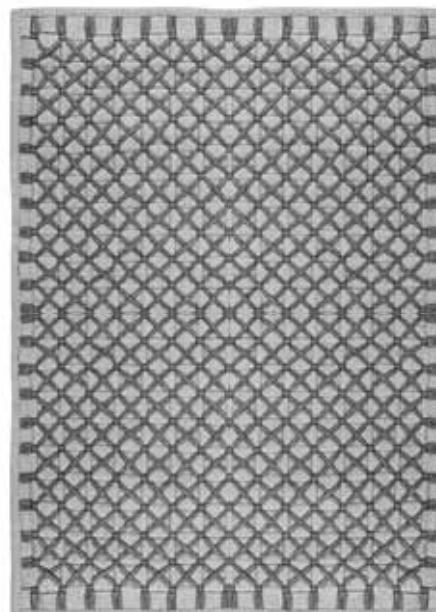
Leila

Composition: Wool, viscose blend
Sizes (cm): 250x300, 300x400, custom
Colour: Grey/blue/khaki/silver/beige
Pile height: 2.2 cm
Technique: Hand knotted
Area recommended: All areas
Origin: India



Malibu

Composition: 100% wool
Sizes (cm): 200x300, 250x350, 300x400, custom
Colour: Soft rust/aqua
Pile height: 1.5cm
Technique: Hand tufted
Area recommended: All areas
Origin: India



Marco

Composition: 100% polypropylene
Sizes (cm): 60x140, 60x100, 160x230
Colour: Grey/charcoal
Pile height: 1cm
Technique: Hand woven
Area recommended: All areas indoor/outdoor
Origin: India



Mateo

Composition: Viscose, wool blend
Sizes (cm): 250x350, 300x400, custom
Colour: Natural/ivory/charcoal/silver
Pile height: 0.7cm
Technique: Hand loomed
Area recommended: High traffic areas
Origin: India



Mezzanine

Composition: 100% viscose
 Sizes (cm): 200x300, 300x400
 Colour: Papyrus
 Pile height: 1 cm
 Technique: Hand loomed
 Area recommended: Bedroom, occasional spaces
 Origin: India



Milano

Composition: 100% wool
 Sizes (cm): 200x300, 250x350, 300x400
 Colour: Silver/charcoal/grey
 Pile height: 2 cm
 Technique: Hand loomed
 Area recommended: All areas
 Origin: India



Mongolia

Composition: Wool, viscose blend
 Sizes (cm): 200x300, 250x350, 300x400, custom
 Colour: Silver
 Pile height: 1 cm
 Technique: Hand loomed
 Area recommended: All areas
 Origin: India



Morrison



Composition: 100% wool
 Sizes (cm): 200x300, 250x350, custom
 Colours (left to right): Natural, Dark Grey
 Pile height: 0.8 cm
 Technique: Hand loomed
 Area recommended: All areas
 Origin: India



Moss

Composition: Wool, bamboo silk blend
 Sizes (cm): 250x300, 300x400, custom
 Colour: Beige/grey/khaki/mauve
 Pile height: 2.2 cm
 Technique: Hand knotted
 Area recommended: All areas
 Origin: India



Nelson

Composition: 100% wool
 Sizes (cm): 200x300, 250x350, 300x400, custom
 Colour: Blue/beige
 Pile height: 1.5 cm
 Technique: Hand tufted
 Area recommended: All areas
 Origin: India



Nomadique

Composition: 100% wool
 Sizes (cm): 200x300, 250x350, 300x400, custom
 Colour: Beige/rose/multi
 Pile height: 1 cm
 Technique: Hand knotted
 Area recommended: All areas
 Origin: India



Oasis

Composition: 100% bamboo silk
 Size (cm): 250x300, 300x400
 Colour: Multi
 Pile height: 1.4cm
 Technique: Hand knotted
 Area recommended: All areas
 Origin: India



Oban

Composition: 100% organic wool
 Sizes (cm): 200x300, 250x350, 300x400, custom
 Colour: Natural Grey/ivory
 Pile height: 1.2cm
 Technique: Hand woven
 Area recommended: Low to medium traffic areas
 Origin: India



Orchid

Limited Edition

Composition: Wool, viscose blend
 Sizes (cm): 300x400, custom
 Colour: Charcoal/silver
 Pile height: 1 cm
 Technique: Hand loomed
 Area recommended: All areas
 Origin: India



Pablo

Composition: Wool, bamboo silk blend
 Sizes (cm): 250x350
 Colour: Blue/ivory
 Pile height: 0.8 cm
 Technique: Hand knotted
 Area recommended: All areas
 Origin: India



Parko



Composition: Wool, viscose blend
 Sizes (cm): 160x230 (Charcoal only), 200x300, 300x400
 Colours (left to right): Charcoal, Grey
 Pile height: 1.5 cm
 Technique: Hand woven
 Area recommended: Bedroom, occasional spaces
 Origin: India



Pearle



Composition: 100% New Zealand wool
 Sizes (cm): 200x300, 250x350, 300x400, 270 dia (round)
 Colours (left to right): Marigold, Coral, Blue Willow
 Pile height: 2 cm
 Technique: Hand woven
 Area recommended: Low traffic areas
 Origin: India



Porcelain

Composition: 100% bamboo silk
 Sizes (cm): 250x300, 300x400, custom
 Colour: Multi
 Pile height: 2.2 cm
 Technique: Hand knotted
 Area recommended: All areas
 Origin: India



Pride

Composition: Wool, viscose blend
 Sizes (cm): 200x300, 300x400
 Colour: Ivory
 Pile height: 2 cm
 Technique: Hand woven
 Area recommended: Bedroom, occasional spaces, low traffic areas
 Origin: India



Quatro

Composition: Wool, viscose, jute blend
 Sizes (cm): 200x300, 250x350, 300x400
 Colour: Natural/ ash grey
 Pile height: 1.4 cm
 Technique: Hand knotted
 Area recommended: All areas
 Origin: India



Rabat

Composition: 100% wool
 Sizes (cm): 250x350, custom
 Colour: Grey/blue/ivory
 Pile height: 1.5 cm
 Technique: Hand knotted
 Area recommended: All areas
 Origin: India



Raffles

Composition: 100% Mulberry silk
 Sizes (cm): 200x300, 250x350, custom
 Colour: Doeskin brown
 Pile height: 1.5 cm
 Technique: Hand loomed
 Area recommended: All areas
 Origin: India



Ridge Natural/Grey/Charcoal

Composition: 100% wool
 Sizes (cm): 100x400, 250x350, 300x400, custom
 Colour: Natural/grey/charcoal
 Pile height: 2.2 cm
 Technique: Hand knotted
 Area recommended: Bedroom, occasional spaces
 Origin: India



Ridge Neopolitan

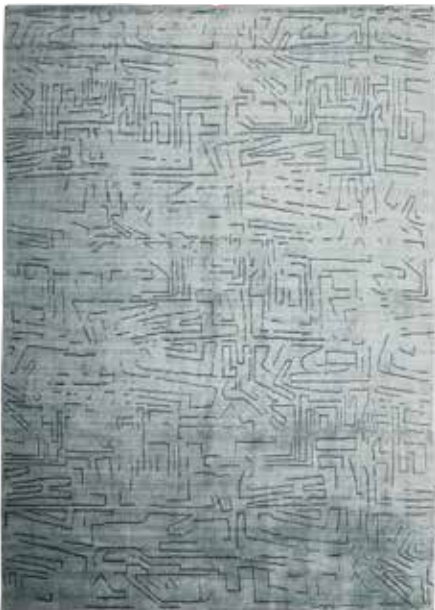
Composition: 100% wool
 Sizes (cm): 100x300, 100x350, 100x400, 200x300, 250x350, 300x400, custom
 Colour: Pink/mustard/blue/grey/natural
 Pile height: 2.2 cm
 Technique: Hand knotted
 Area recommended: Bedroom, occasional spaces
 Origin: India



Raphael

Limited Edition

Composition: Wool, viscose blend
 Sizes (cm): 250x350
 Colour: Black/white
 Pile height: 2 cm
 Technique: Hand loomed
 Area recommended: All areas
 Origin: India



Rune

Composition: Wool, viscose blend
 Sizes (cm): 250x350, 300x400, custom
 Colour: Light blue/charcoal
 Pile height: 2.5 cm
 Technique: Hand loomed
 Area recommended: Bedroom, occasional spaces
 Origin: India



Roman



Composition: Wool, viscose blend
 Sizes (cm): 200x300, 250x350, 300x400
 Colours (left to right): Ivory, Silver
 Pile height: 2 cm
 Technique: Hand woven
 Area recommended: Bedroom, occasional spaces
 Origin: India



Safari

Composition: Wool, bamboo silk blend
 Sizes (cm): 250x350, 300x400, custom
 Colour: Ivory/greys
 Pile height: 0.8 cm
 Technique: Hand knotted
 Area recommended: All areas
 Origin: India



Salone

Composition: 100% wool
 Sizes (cm): 200x300, 250x350, 300x400, custom
 Colour: Beige/blue/multi
 Pile height: 1 cm
 Technique: Hand knotted 4/4
 Area recommended: All areas
 Origin: India



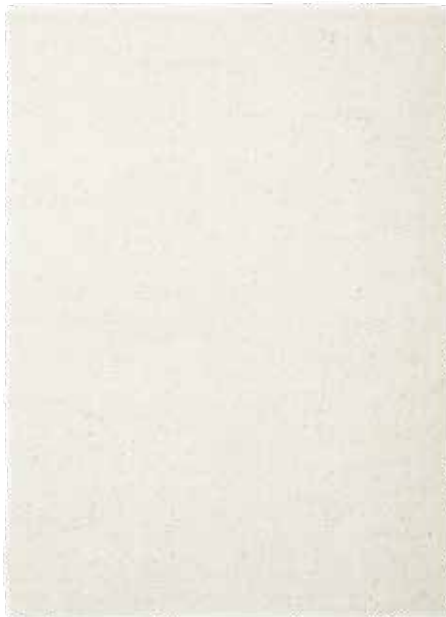
Sanctuary Grey

Composition: 100% silk
 Sizes (cm): 200x300, 250x350, 300x400cm, custom
 Colour: Grey
 Pile height: 1.6 cm
 Technique: Hand loomed
 Area recommended: All areas
 Origin: India



Scarpa

Composition: 100% wool
 Sizes (cm): 200x300, 300x400, custom
 Colour: Grey/beige/cream
 Pile height: 0.8 cm
 Technique: Hand knotted
 Area recommended: All areas
 Origin: India



Skagen



Composition: Wool, viscose blend
 Sizes (cm): 200x300, 250x350, 300x400
 Colours (left to right): Ivory, Silver
 Pile height: 1.2 cm
 Technique: Hand woven
 Area recommended: Bedroom, occasional spaces
 Origin: India



Skye

Composition: 100% wool
 Sizes (cm): 200x300, 250x350, 300x400, custom
 Colour: Blues/charcoal/grey/black
 Pile Height: 2cm
 Technique: Hand woven
 Area recommended: All areas
 Origin: India



Soho

Composition: Wool, bamboo silk blend
 Sizes (cm): 250x350, 300x400, custom
 Colour: Grey/beige/black
 Pile height: 0.8 cm
 Technique: Hand knotted
 Area recommended: All areas
 Origin: India



Tait

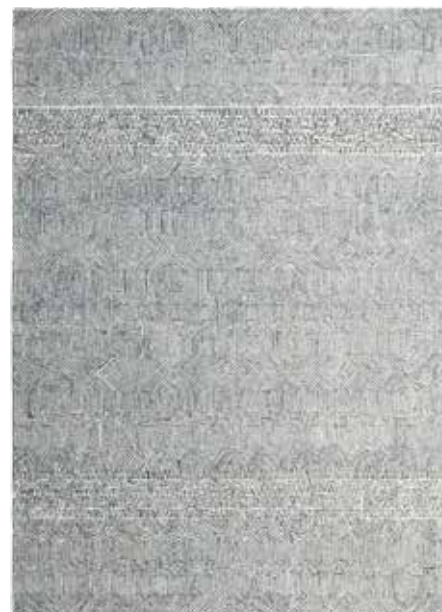


Composition: 100% New Zealand wool
Sizes (cm): 200x300, 250x350, 300x400, custom
Colours (left to right): Rice, Watercress
Pile height: 0.7 cm
Technique: Hand loomed
Area recommended: All areas
Origin: India



Tamsin

Composition: 100% wool
Sizes (cm): 200x300, 250x350
Colour: Powder pink/blue/multi
Pile height: 2 cm
Technique: Hand knotted
Area recommended: All areas
Origin: India



Tunisia

Composition: 100% wool
Sizes (cm): 200x300, 250x350, 300x400, custom
Colour: Beige/grey/ivory
Pile height: 1.5 cm
Technique: Hand tufted
Area recommended: All areas
Origin: India

t.

II. VINTAGE PERSIAN COLLECTION

Elevate your space with the most coveted rug. These once in a lifetime Vintage Persian rugs are timeless, blurring the lines of art and function. Our Vintage Persian rugs are meticulously hand selected, based on provenance, design, age and colour. Our Vintage Persian Collection consists of carpets guaranteed to make a statement and push boundaries as we honour the hands that weaved these pieces many years ago and the hands that have now added to their story.

Restoring these rugs from another time is the sustainable practice of over-dyeing rugs that are unloved, worn and faded. Through this process we take part in the recycling movement. This recycling movement helps preserve traditional rugs of note for future generations, whilst acknowledging the skill and care taken to create them in the first place. One rug can cross hundreds of hands and multiple decades before finding their home.

Beyond compare, each of our finely hand-knotted Vintage Persian rugs are up to 100 years old and come with a certificate of authenticity. Create a space where time stands still with one off designs destined to be envied by everyone in the know.



Vintage Persian 46

Composition: 100% wool
Size (cm): 355x312
Finishing: Washed and overdyed
Pile height: 1 cm
Technique: Hand knotted
Area recommended: All areas
Origin: Bakhtiari, Iran



Vintage Persian 1606

Composition: 100% wool
Size (cm): 374x367
Finishing: Washed and overdyed
Pile height: 1 cm
Technique: Hand knotted
Area recommended: All areas
Origin: Kerman, Iran



Vintage Persian 5159

Composition: 100% wool
Size (cm): 320x284
Finishing: Washed and overdyed
Pile height: 1 cm
Technique: Hand knotted
Area recommended: All areas
Origin: Tabriz, Iran



Vintage Persian 5092

Composition: 100% wool
Size (cm): 350x258
Finishing: Washed and overdyed
Pile height: 1 cm
Technique: Hand knotted
Area recommended: All areas
Origin: Tabriz, Iran



Vintage Persian 5734

Composition: 100% wool
Size (cm): 411x201
Finishing: Washed and overdyed
Pile height: 1 cm
Technique: Hand knotted
Area recommended: All areas
Origin: Kerman, Iran



Vintage Persian 5879

Composition: 100% wool
Size (cm): 357x259
Finishing: Washed and overdyed
Pile height: 1 cm
Technique: Hand knotted
Area recommended: All areas
Origin: Kerman, Iran



Vintage Persian 6395

Composition: 100% wool
 Size (cm): 379x289
 Finishing: Washed and overdyed
 Pile height: 1 cm
 Technique: Hand knotted
 Area recommended: All areas
 Origin: Tabriz, Iran



Vintage Persian 6554

Composition: 100% wool
 Size (cm): 470x341
 Finishing: Washed and overdyed
 Pile height: 1 cm
 Technique: Hand knotted
 Area recommended: All areas
 Origin: Kerman, Iran



Vintage Persian 8544

Composition: 100% wool
 Size (cm): 406x298
 Finishing: Washed and overdyed
 Pile height: 1 cm
 Technique: Hand knotted
 Area recommended: All areas
 Origin: Kerman, Iran



Vintage Persian 8627

Composition: 100% wool
 Size (cm): 376x294
 Finishing: Washed and overdyed
 Pile height: 1 cm
 Technique: Hand knotted
 Area recommended: All areas
 Origin: Kerman, Iran



Vintage Persian 8682

Composition: 100% wool
 Size (cm): 372x286
 Finishing: Washed and overdyed
 Pile height: 1 cm
 Technique: Hand knotted
 Area recommended: All areas
 Origin: Kerman, Iran



Vintage Persian 8801

Composition: 100% wool
 Size (cm): 362x269
 Finishing: Washed and overdyed
 Pile height: 1 cm
 Technique: Hand knotted
 Area recommended: All areas
 Origin: Kerman, Iran



Vintage Persian 9137

Composition: 100% wool
Size (cm): 410x302
Finishing: Washed and overdyed
Pile height: 1 cm
Technique: Hand knotted
Area recommended: All areas
Origin: Kerman, Iran



Vintage Persian 9589

Composition: 100% wool
Size (cm): 418x286
Finishing: Washed and overdyed
Pile height: 1 cm
Technique: Hand knotted
Area recommended: All areas
Origin: Kerman, Iran



Vintage Persian 9592

Composition: 100% wool
Size (cm): 401x292
Finishing: Washed and overdyed
Pile height: 1 cm
Technique: Hand knotted
Area recommended: All areas
Origin: Kerman, Iran



Vintage Persian 10013

Composition: 100% wool
Size (cm): 400x323
Finishing: Washed and overdyed
Pile height: 1 cm
Technique: Hand knotted
Area recommended: All areas
Origin: Bakhtiari, Iran



Vintage Persian 10164

Composition: 100% wool
Size (cm): 294x197
Finishing: Washed and overdyed
Pile height: 1 cm
Technique: Hand knotted
Area recommended: All areas
Origin: Bakhtiari, Iran



Vintage Persian 11214

Composition: 100% wool
Size (cm): 358x296
Finishing: Washed and overdyed
Pile height: 1 cm
Technique: Hand knotted
Area recommended: All areas
Origin: Bakhtiari, Iran



Vintage Persian 13020

Composition: 100% wool
 Size (cm): 302x203
 Finishing: Washed and overdyed
 Pile height: 1 cm
 Technique: Hand knotted
 Area recommended: All areas
 Origin: Tabriz, Iran



Vintage Persian 13034

Composition: 100% wool
 Size (cm): 386x293
 Finishing: Washed and overdyed
 Pile height: 1 cm
 Technique: Hand knotted
 Area recommended: All areas
 Origin: Bakhtiari, Iran



Vintage Persian 13051

Composition: 100% wool
 Size (cm): 378x323
 Finishing: Washed and overdyed
 Pile height: 1 cm
 Technique: Hand knotted
 Area recommended: All areas
 Origin: Bakhtiari, Iran



Vintage Persian 13196

Composition: 100% wool
 Size (cm): 395x306
 Finishing: Washed and overdyed
 Pile height: 1 cm
 Technique: Hand knotted
 Area recommended: All areas
 Origin: Kerman, Iran



Vintage Persian 13216

Composition: 100% wool
 Size (cm): 399x298
 Finishing: Washed and overdyed
 Pile height: 1 cm
 Technique: Hand knotted
 Area recommended: All areas
 Origin: Kerman, Iran



Vintage Persian 13321

Composition: 100% wool
 Size (cm): 291x198
 Finishing: Washed and overdyed
 Pile height: 1 cm
 Technique: Hand knotted
 Area recommended: All areas
 Origin: Tabriz, Iran



Vintage Persian 13325

Composition: 100% wool
Size (cm): 343x260
Finishing: Washed and overdyed
Pile height: 1 cm
Technique: Hand knotted
Area recommended: All areas
Origin: Kerman, Iran



Vintage Persian 13377

Composition: 100% wool
Size (cm): 385x276
Finishing: Washed and overdyed
Pile height: 1 cm
Technique: Hand knotted
Area recommended: All areas
Origin: Kerman, Iran



Vintage Persian 13382

Composition: 100% wool
Size (cm): 373x269
Finishing: Washed and overdyed
Pile height: 1 cm
Technique: Hand knotted
Area recommended: All areas
Origin: Kerman, Iran



Vintage Persian 13478

Composition: 100% wool
Size (cm): 405x302
Finishing: Washed and overdyed
Pile height: 1 cm
Technique: Hand knotted
Area recommended: All areas
Origin: Kerman, Iran



Vintage Persian 13683

Composition: 100% wool
Size (cm): 403x298
Finishing: Washed and overdyed
Pile height: 1 cm
Technique: Hand knotted
Area recommended: All areas
Origin: Kerman, Iran



Vintage Persian 13730

Composition: 100% wool
Size (cm): 443x296
Finishing: Washed and overdyed
Pile height: 1 cm
Technique: Hand knotted
Area recommended: All areas
Origin: Kerman, Iran



Vintage Persian 13815

Composition: 100% wool
 Size (cm): 378x297
 Finishing: Washed and overdyed
 Pile height: 1 cm
 Technique: Hand knotted
 Area recommended: All areas
 Origin: Tabriz, Iran



Vintage Persian 14041

Composition: 100% wool
 Size (cm): 287x196
 Finishing: Washed and overdyed
 Pile height: 1 cm
 Technique: Hand knotted
 Area recommended: All areas
 Origin: Tabriz, Iran



Vintage Persian 14145

Composition: 100% wool
 Size (cm): 302x199
 Finishing: Washed and overdyed
 Pile height: 1 cm
 Technique: Hand knotted
 Area recommended: All areas
 Origin: Tabriz, Iran



Vintage Persian 14286

Composition: 100% wool
 Size (cm): 302x198
 Finishing: Washed and overdyed
 Pile height: 1 cm
 Technique: Hand knotted
 Area recommended: All areas
 Origin: Tabriz, Iran



Vintage Persian 14369

Composition: 100% wool
 Size (cm): 341x240
 Finishing: Washed and overdyed
 Pile height: 1 cm
 Technique: Hand knotted
 Area recommended: All areas
 Origin: Tabriz, Iran



Vintage Persian 14392

Composition: 100% wool
 Size (cm): 293x199
 Finishing: Washed and overdyed
 Pile height: 1 cm
 Technique: Hand knotted
 Area recommended: All areas
 Origin: Tabriz, Iran



Vintage Persian 14397

Composition: 100% wool
Size (cm): 286x195
Finishing: Washed and overdyed
Pile height: 1 cm
Technique: Hand knotted
Area recommended: All areas
Origin: Tabriz, Iran



Vintage Persian 14559

Composition: 100% wool
Size (cm): 295x195
Finishing: Washed and overdyed
Pile height: 1 cm
Technique: Hand knotted
Area recommended: All areas
Origin: Tabriz, Iran



Vintage Persian 14562

Composition: 100% wool
Size (cm): 293x213
Finishing: Washed and overdyed
Pile height: 1 cm
Technique: Hand knotted
Area recommended: All areas
Origin: Bakhtiari, Iran



Vintage Persian 14565

Composition: 100% wool
Size (cm): 182x139
Finishing: Washed and overdyed
Pile height: 1 cm
Technique: Hand knotted
Area recommended: All areas
Origin: Tabriz, Iran



Vintage Persian 14566

Composition: 100% wool
Size (cm): 298x192
Finishing: Washed and overdyed
Pile height: 1 cm
Technique: Hand knotted
Area recommended: All areas
Origin: Kerman, Iran



Vintage Persian 14595

Composition: 100% wool
Size (cm): 298x192
Finishing: Washed and overdyed
Pile height: 1 cm
Technique: Hand knotted
Area recommended: All areas
Origin: Tabriz, Iran



Vintage Persian 14605

Composition: 100% wool
 Size (cm): 272x198
 Finishing: Washed and overdyed
 Pile height: 1 cm
 Technique: Hand knotted
 Area recommended: All areas
 Origin: Tabriz, Iran



Vintage Persian 14620

Composition: 100% wool
 Size (cm): 295x203
 Finishing: Washed and overdyed
 Pile height: 1 cm
 Technique: Hand knotted
 Area recommended: All areas
 Origin: Tabriz, Iran



Vintage Persian 14655

Composition: 100% wool
 Size (cm): 388x288
 Finishing: Washed and overdyed
 Pile height: 1 cm
 Technique: Hand knotted
 Area recommended: All areas
 Origin: Kerman, Iran



Vintage Persian 14666

Composition: 100% wool
 Size (cm): 387x295
 Finishing: Washed and overdyed
 Pile height: 1 cm
 Technique: Hand knotted
 Area recommended: All areas
 Origin: Kerman, Iran



Vintage Persian 14670

Composition: 100% wool
 Size (cm): 400x297
 Finishing: Washed and overdyed
 Pile height: 1 cm
 Technique: Hand knotted
 Area recommended: All areas
 Origin: Kerman, Iran



Vintage Persian 14675

Composition: 100% wool
 Size (cm): 384x303
 Finishing: Washed and overdyed
 Pile height: 1 cm
 Technique: Hand knotted
 Area recommended: All areas
 Origin: Kerman, Iran



Vintage Persian 14701

Composition: 100% wool
Size (cm): 359x265
Finishing: Washed and overdyed
Pile height: 1 cm
Technique: Hand knotted
Area recommended: All areas
Origin: Tabriz, Iran



Vintage Persian 14702

Composition: 100% wool
Size (cm): 290x223
Finishing: Washed and overdyed
Pile height: 1 cm
Technique: Hand knotted
Area recommended: All areas
Origin: Bakhtiari, Iran



Vintage Persian 14704

Composition: 100% wool
Size (cm): 373x304
Finishing: Washed and overdyed
Pile height: 1 cm
Technique: Hand knotted
Area recommended: All areas
Origin: Bakhtiari, Iran



Vintage Persian 14705

Composition: 100% wool
Size (cm): 378x297
Finishing: Washed and overdyed
Pile height: 1 cm
Technique: Hand knotted
Area recommended: All areas
Origin: Bakhtiari, Iran



Vintage Persian 14713

Composition: 100% wool
Size (cm): 284x191
Finishing: Washed and overdyed
Pile height: 1 cm
Technique: Hand knotted
Area recommended: All areas
Origin: Tabriz, Iran



Vintage Persian 14720

Composition: 100% wool
Size (cm): 398x288
Finishing: Washed and overdyed
Pile height: 1 cm
Technique: Hand knotted
Area recommended: All areas
Origin: Kerman, Iran



Vintage Persian 14722

Composition: 100% wool
 Size (cm): 385x292
 Finishing: Washed and overdyed
 Pile height: 1 cm
 Technique: Hand knotted
 Area recommended: All areas
 Origin: Kerman, Iran



Vintage Persian 14723

Composition: 100% wool
 Size (cm): 307x199
 Finishing: Washed and overdyed
 Pile height: 1 cm
 Technique: Hand knotted
 Area recommended: All areas
 Origin: Kerman, Iran



Vintage Persian 14724

Composition: 100% wool
 Size (cm): 287x196
 Finishing: Washed and overdyed
 Pile height: 1 cm
 Technique: Hand knotted
 Area recommended: All areas
 Origin: Bakhtiari, Iran



Vintage Persian 14731

Composition: 100% wool
 Size (cm): 307x166
 Finishing: Washed and overdyed
 Pile height: 1 cm
 Technique: Hand knotted
 Area recommended: All areas
 Origin: Bakhtiari, Iran



Vintage Persian 14817

Composition: 100% wool
 Size (cm): 268x198
 Finishing: Washed and overdyed
 Pile height: 1 cm
 Technique: Hand knotted
 Area recommended: All areas
 Origin: Bakhtiari, Iran



Vintage Persian 14824

Composition: 100% wool
 Size (cm): 310x214
 Finishing: Washed and overdyed
 Pile height: 1 cm
 Technique: Hand knotted
 Area recommended: All areas
 Origin: Bakhtiari, Iran



Vintage Persian 14825

Composition: 100% wool
Size (cm): 300x212
Finishing: Washed and overdyed
Pile height: 1 cm
Technique: Hand knotted
Area recommended: All areas
Origin: Bakhtiari, Iran



Vintage Persian 14839

Composition: 100% wool
Size (cm): 285x189
Finishing: Washed and overdyed
Pile height: 1 cm
Technique: Hand knotted
Area recommended: All areas
Origin: Tabriz, Iran



Vintage Persian 14841

Composition: 100% wool
Size (cm): 343x266
Finishing: Washed and overdyed
Pile height: 1 cm
Technique: Hand knotted
Area recommended: All areas
Origin: Bakhtiari, Iran



Vintage Persian 14886

Composition: 100% wool
Size (cm): 292x194
Finishing: Washed and overdyed
Pile height: 1 cm
Technique: Hand knotted
Area recommended: All areas
Origin: Tabriz, Iran



Vintage Persian 14888

Composition: 100% wool
Size (cm): 292x198
Finishing: Washed and overdyed
Pile height: 1 cm
Technique: Hand knotted
Area recommended: All areas
Origin: Tabriz, Iran



Vintage Persian 14889

Composition: 100% wool
Size (cm): 300x189
Finishing: Washed and overdyed
Pile height: 1 cm
Technique: Hand knotted
Area recommended: All areas
Origin: Tabriz, Iran



Vintage Persian 14890

Composition: 100% wool
Size (cm): 281x197
Finishing: Washed and overdyed
Pile height: 1 cm
Technique: Hand knotted
Area recommended: All areas
Origin: Tabriz, Iran



Vintage Persian 14891

Composition: 100% wool
Size (cm): 301x215
Finishing: Washed and overdyed
Pile height: 1 cm
Technique: Hand knotted
Area recommended: All areas
Origin: Tabriz, Iran

t.

III. EXCLUSIVE WEAVES COLLECTION

Illuminate your room with mood and ambience, by tempting yourself into a limited-edition silk masterpiece. Saturated in remarkable chromatic colours these exclusive rugs offer an irreplaceable aura. Spontaneous bursts of pattern crafted with hand-knotted silk layers this collection, forming a capsule range which won't be here for too long.



Ikat

Composition: 60% wool, 20% silk, 20% cotton
 Size (cm): 303x431
 Colour: Silver
 Pile height: 1.5cm
 Technique: Hand knotted
 Area recommended: All areas
 Origin: India



RBN4306

Composition: 60% viscose, 20% cotton, 20% wool
 Size (cm): 248x306
 Colour: Beige/blue/apricot/cream/multi
 Pile height: 1cm
 Technique: Hand knotted
 Area recommended: All areas
 Origin: India



RBN4439

Composition: 60% viscose, 20% wool, 20% cotton
 Size (cm): 247x314
 Colour: Vintage finish khaki/beige/apricot/multi
 Pile height: 1.2 cm
 Technique: Hand knotted
 Area recommended: All areas
 Origin: India



RBN4460.1

Composition: 60% viscose, 20% wool, 20% cotton
 Size (cm): 278x375
 Colour: Beige/taupe/natural/khaki
 Pile height: 1 cm
 Technique: Hand knotted
 Area recommended: All areas
 Origin: India



Storm

Composition: Authentic silk, wool blend
 Size (cm): 275x383
 Colour: Grey/blue/soft pink/ivory
 Pile height: 1.3cm
 Technique: Hand knotted
 Area recommended: All areas
 Origin: India



SWN107

Composition: 70% silk, 15% wool, 15% cotton
 Size (cm): 249x322
 Colour: Bisque/sea shell blue
 Pile height: 1.2 cm
 Technique: Hand knotted
 Area recommended: All Areas
 Origin: India



SWN111

Composition: 70% silk, 15% wool, 15% cotton
 Size (cm): 282x366cm
 Colour: Pink/orange/cream/teal/brown
 Pile height: 1.3 cm
 Technique: Hand knotted
 Area recommended: All areas
 Origin: India



SWN117

Composition: 70% silk, 15% wool, 15% cotton
 Size (cm): 246x300
 Colour: Mustard/taupe/brown/multi
 Pile height: 1.3cm
 Technique: Hand knotted
 Area recommended: All areas
 Origin: India



Tribal

Composition: 60% wool, 20% silk, 20% cotton
 Size (cm): 303x431
 Colour: Natural/black
 Pile height: 1.6cm
 Technique: Hand knotted
 Area recommended: All areas
 Origin: India



Whisper

Composition: Authentic silk, wool blend
 Size (cm): 277x373
 Colour: Grey/blue/ivory
 Pile height: 1.3cm
 Technique: Hand knotted
 Area recommended: All areas
 Origin: India

IV. SHOWROOMS

VIC | TAS

TRIBE HOME HQ

1489 MALVERN ROAD, GLEN IRIS VIC 3146

e. SALES@TRIBEHOME.COM.AU

p. 03 9824 6754

NSW | ACT

IVY LANE AGENCY

GROUND FLOOR, 10 ELIZABETH STREET, PADDINGTON NSW 2021

e. GEORGIE@IVYLANE.COM.AU

p. 0401 252 099

QLD

BRAVE AGENCIES

49 MONTPELIER ROAD, BOWEN HILLS QLD 4006

e. SALES@BRAVEDESIGN.COM.AU

p. 07 3257 0002

SA

BERKELEY NEST AGENCIES

SHOP 1/79 UNLEY ROAD, PARKSIDE SA 5063

e. ADMIN@BERKELEYNEST.COM.AU

p. 08 8373 7707

WA

ROSA BROWN AGENCY

80 JERSEY STREET, JOLIMONT WA 6014

e. ROSA@ROSABROWNAGENCY.COM.AU

p. 08 9388 1581

V. CREDITS

ART DIRECTION

TINA RICHARDS

STYLING

REBECCA VITARTAS, KARIN BOCHNIK

PHOTOGRAPHY

CHRIS PEARCE, DYLAN JAMES, LILLIE THOMPSON, DAVE KULESZA

COPYWRITING

MEGHAN BURNS

GRAPHIC DESIGN

ER DESIGNS

FURNITURE / HOMEWARES

With thanks to NICK PEARCE FURNITURE, LIFE INTERIORS,
MADE BY TAIT, BLACK BLAZE SYDNEY, L&M HOME,
HOT HAUS GLASS, IITTALA, DANIEL EMMA, TRIT HOUSE, FOMU,
MODA PIERA, SOPHIE CERAMICS, DISTRICT FURNITURE,
SBW FURNITURE, LOST PROFILE, DIDIER, ELLA BENRUPS AND JAN
VOGELPOEL CERAMICS AND ROSS GARDAM.

